

STAGE TECHNOLOGY. SIMPLY. BETTER.



MOVE-IT

MOBILE STAND

MOBILE STAND



A cost-effective telescopic grandstand that is maintenance-free, allows space-saving storage and is set up in a way that saves on time, manpower and the amount of strength required, and that can be used anywhere and in any size.



Thrust mechanics

Integrated thrust mechanism with rack and pinion guidance for a trouble-free parallel pull-out.



Slope

Different slopes from 16 2/3 cm - 40 cm possible according to customer requirements.



Panel locks

Fast connection of the platforms with each other by integrated panel locks.



Step lighting

Optionally incl. integrated step lighting.



U-Profiles

Pre-assembled U-profiles for transport by lift truck or forklift truck (long/transverse).



Surfaces

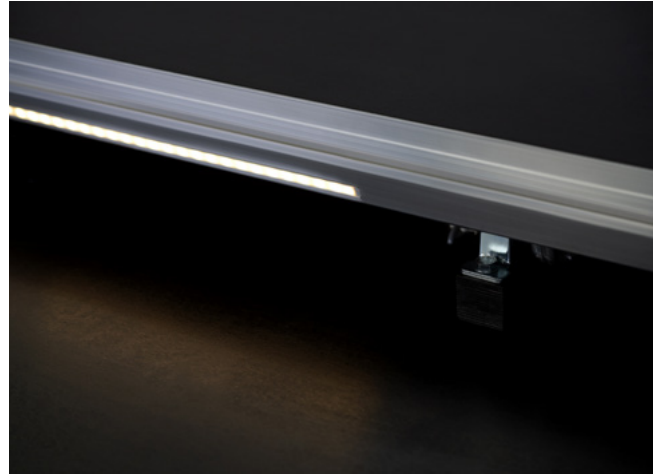
Different surfaces can be realized according to your wishes.



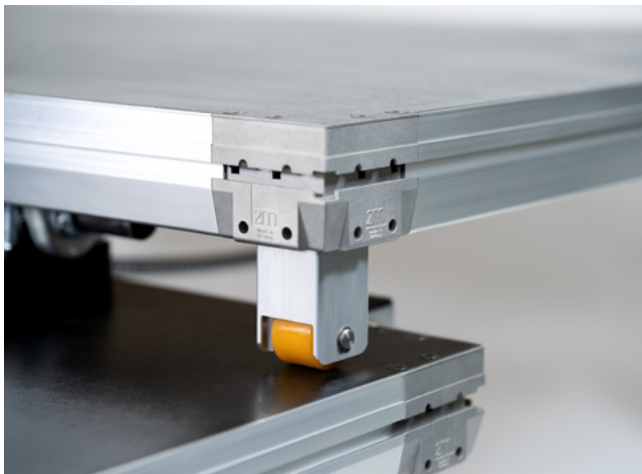
DETAILS



Custom-fit, mechanical locking of the elements



Dimmable LED stage lighting



Low-noise and low-maintenance pull-out roller



Innovative rack module

TECHNICAL DATA



Product category	Mobile stands
Movable/Stationary	mobile
Dimensions	2 x 1.2 m per block
Weight	42 kg
Backing plate thickness	22 mm
Frame height	90 mm
Pitch	200 mm; theatrical pitch
Horizontal test load	1/10 of the vertical test load
Vertical test load	8.5 kN/m ² (867 kg/m ²)
Horizontal traffic load	1/10 of the vertical traffic load
Vertical traffic load	5.0 kN/m ² (510 kg/m ²)
Max. stage height	83.3 cm - 400 cm above the hall floor
Certificated	DIN 13814, 4112, 1055, 15921



**WORKING TOGETHER
TO GET THE BEST RESULTS
WITH YOUR VISION
AND OUR PASSION.**

References:

[2M-DEUTSCHLAND.DE/EN/REFERENCES](https://2m-deutschland.de/en/references)



ENQUIRE NOW!



Andre Nölle
Sales Manager

→ 02102/13399-13
→ info@2m-deutschland.de



Gerrit Pape
Project Manager

→ 02102/13399-14
→ info@2m-deutschland.de